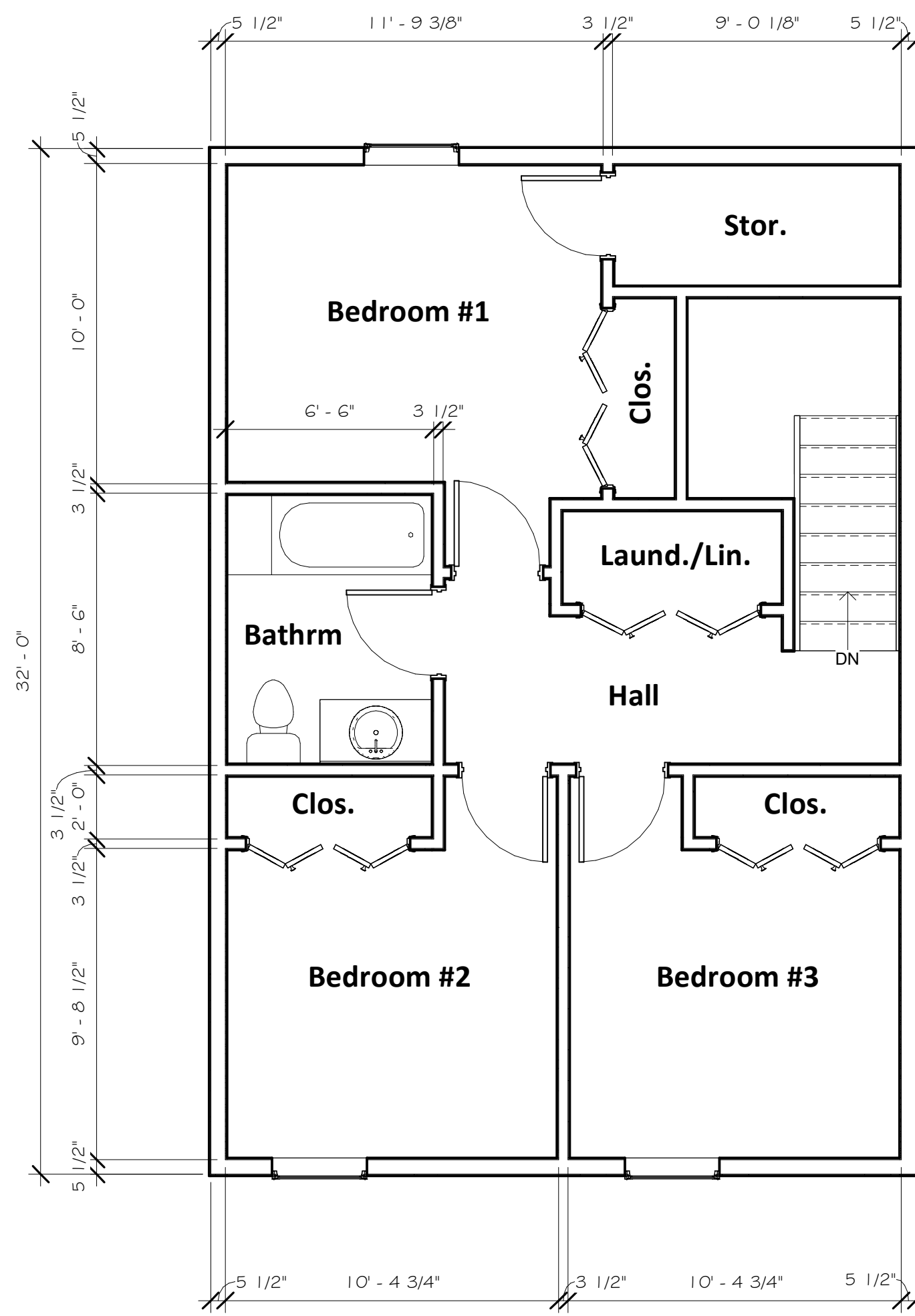
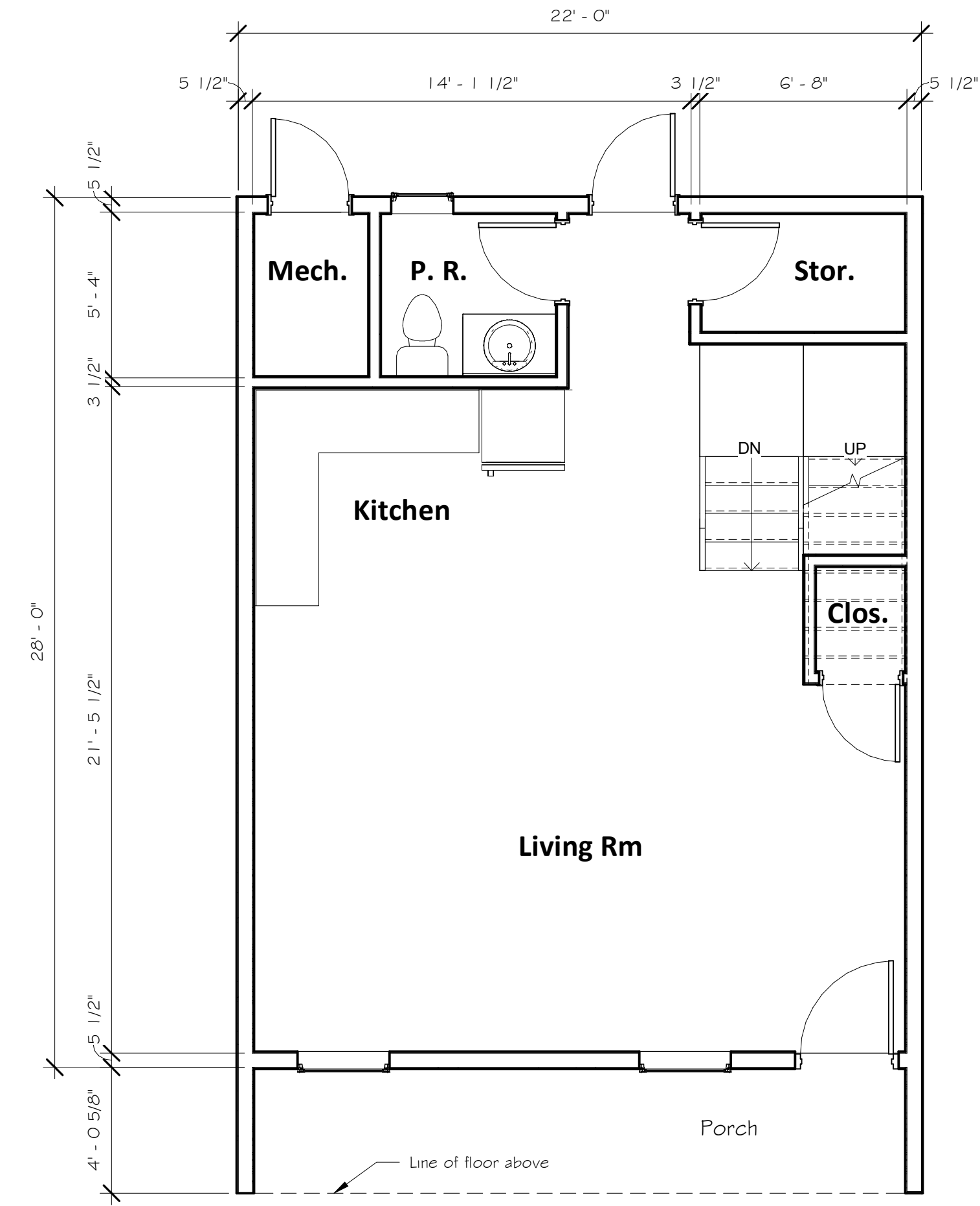


© 2022 HALCYON DESIGN LLC EXPRESSLY RESERVES ITS COMMON LAW COPYRIGHT AND OTHER PROPERTY RIGHTS IN THESE PLANS. THESE PLANS ARE NOT TO BE REPRODUCED, CHANGED OR COPIED IN ANY FORM OR MANNER WHATSOEVER, NOR ARE THEY TO BE ASSIGNED TO ANY THIRD PARTY WITHOUT FIRST OBTAINING THE EXPRESSED WRITTEN PERMISSION AND CONSENT OF HALCYON DESIGN LLC.  
 ALL CONSTRUCTION SHALL CONFORM TO CURRENT INTERNATIONAL BUILDING CODE AND ALL OTHER APPLICABLE CODES.  
 DO NOT SCALE DRAWINGS FOR DIMENSIONS.



2 Upper Floor - 3 Bdrm Unit  
 A10 1/4" = 1'-0"

3 Bedroom Unit:  
 Main Floor = 571 s.f.  
 Upper Floor = 598 s.f.  
 Total Floor Area = 1169 s.f.



1 Main Floor Plan - 3 Bdrm Unit  
 A10 1/4" = 1'-0"

Wesley Townhomes  
 350 11th Ave.  
 Longmont, CO 80501



PO Box 684  
 LaSalle, CO 80645  
 303.906.2617

DATE  
 9.28.22

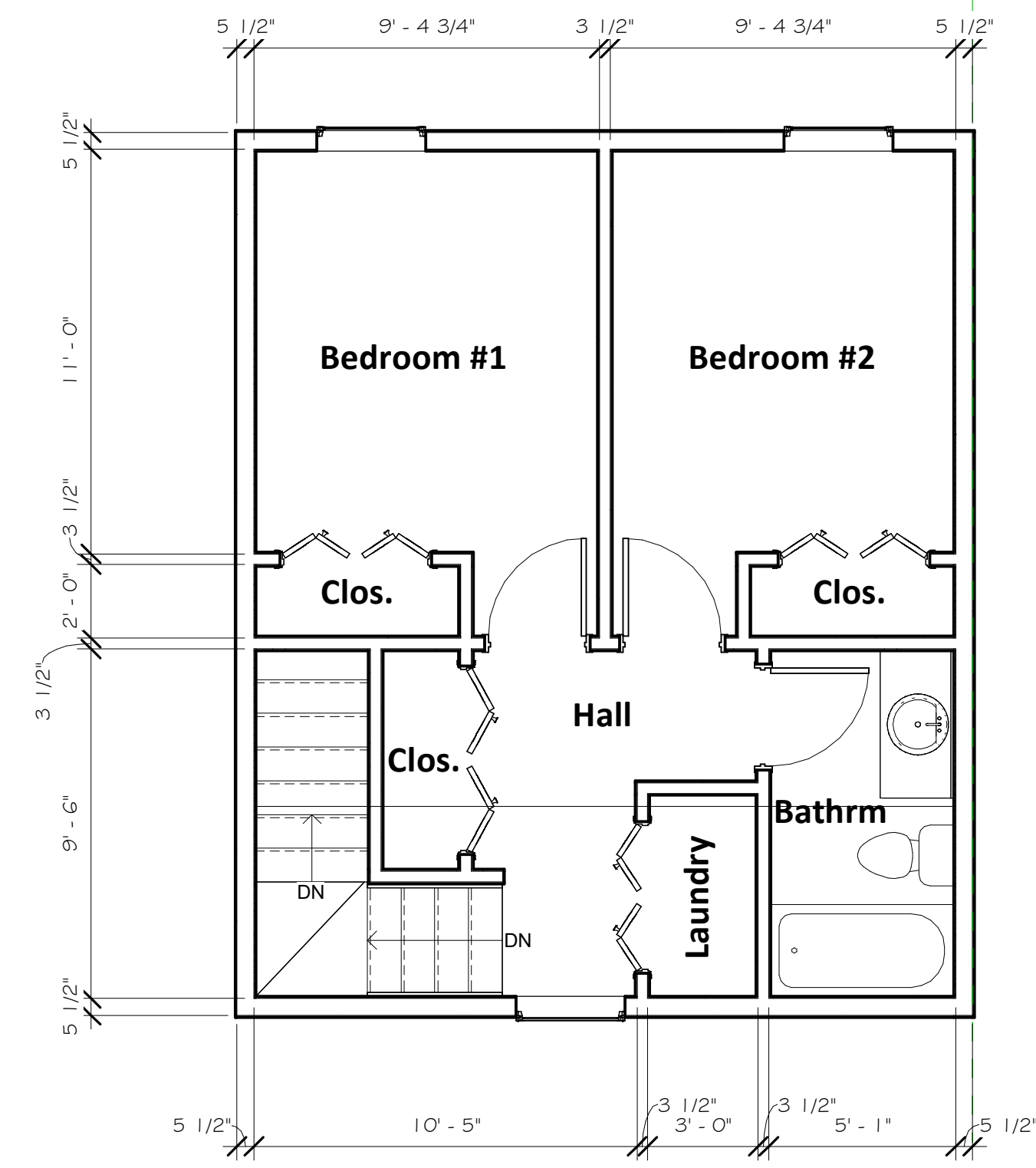
REVISIONS

SHEET TITLE  
 Floor Plans - 3 Bedroom Unit

SHEET NUMBER

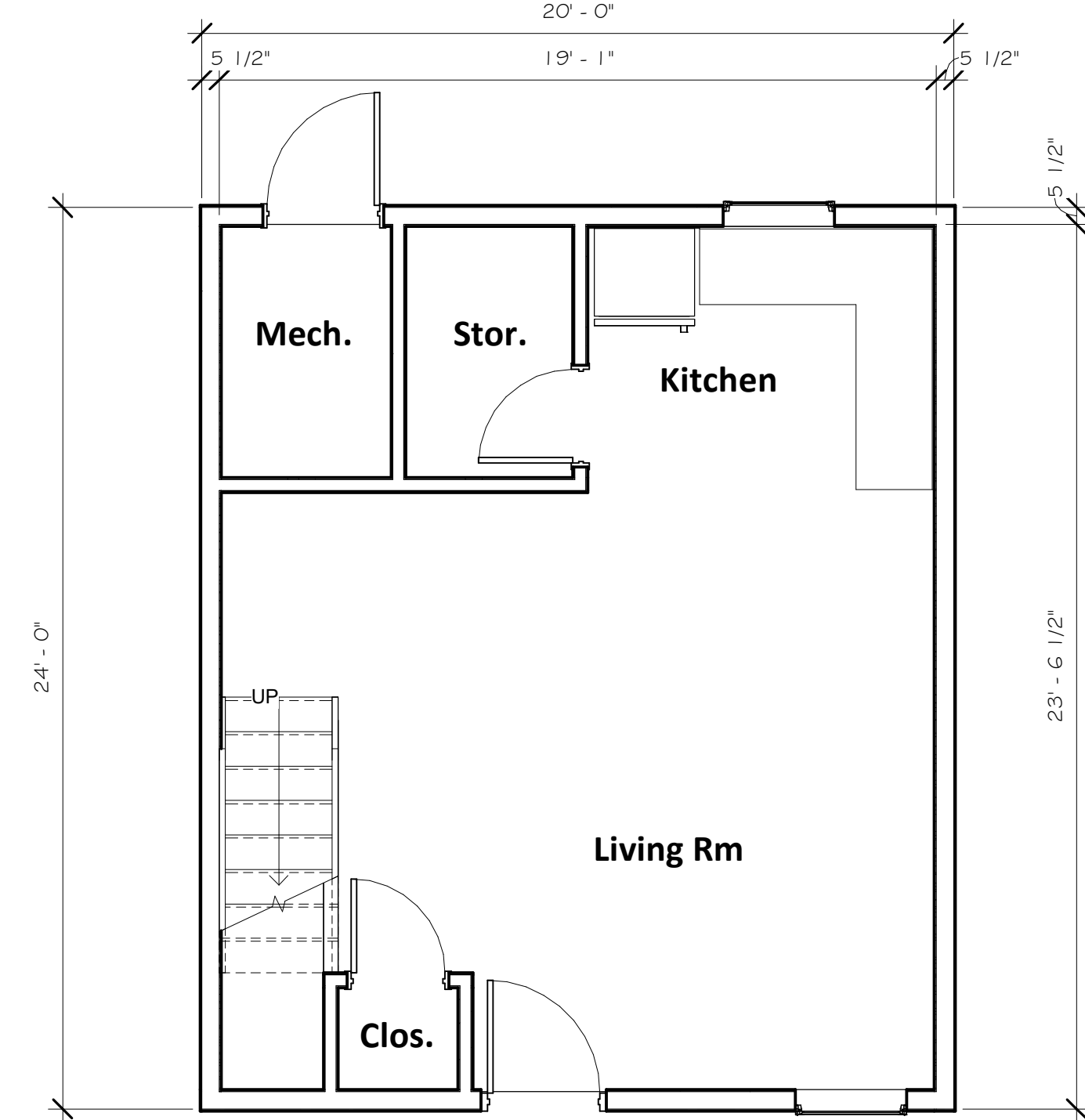
A10

Project No. 2225

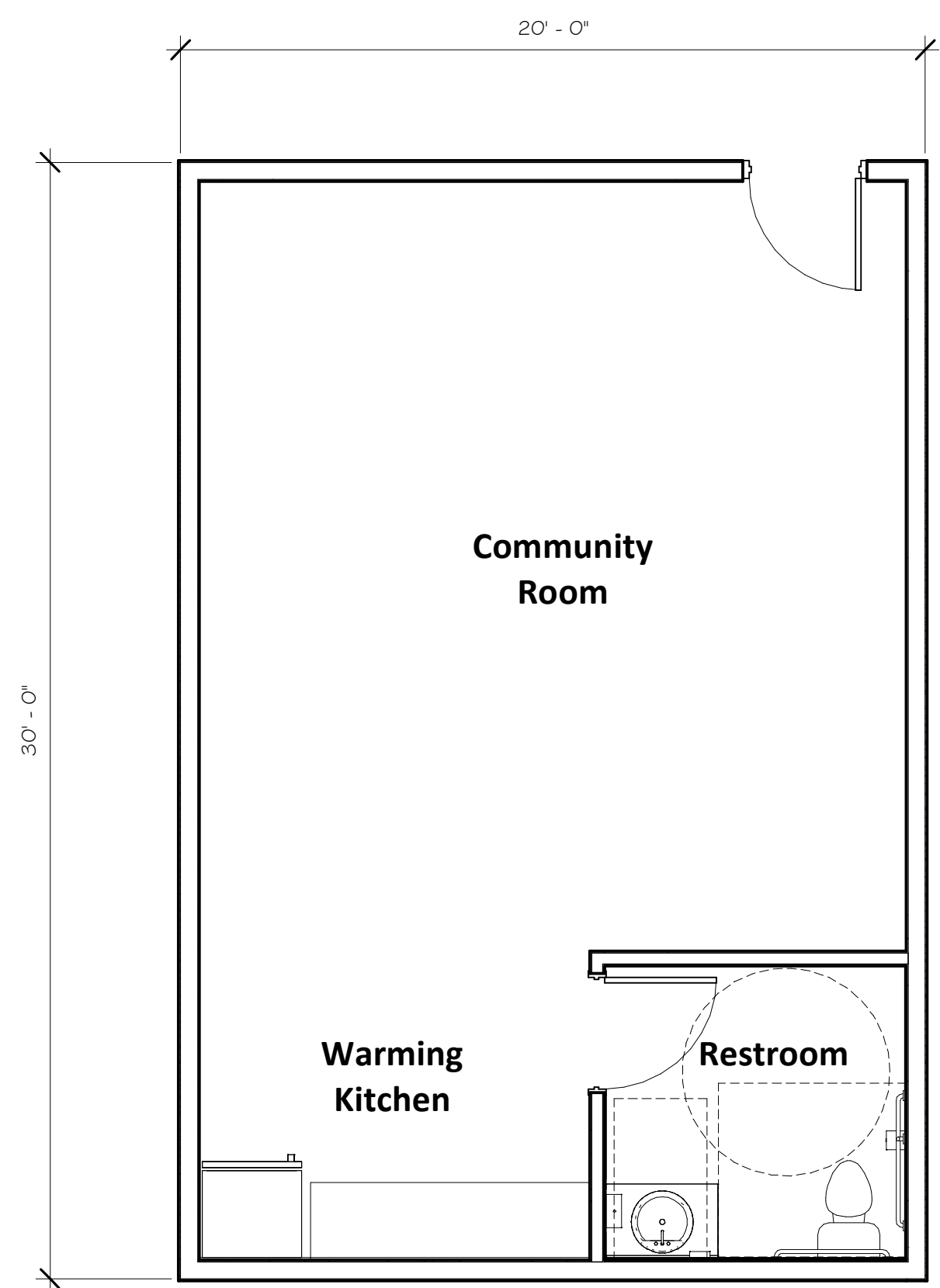


2 Upper Floor - 2 Bdrm Standard Unit  
 1/4" = 1'-0"

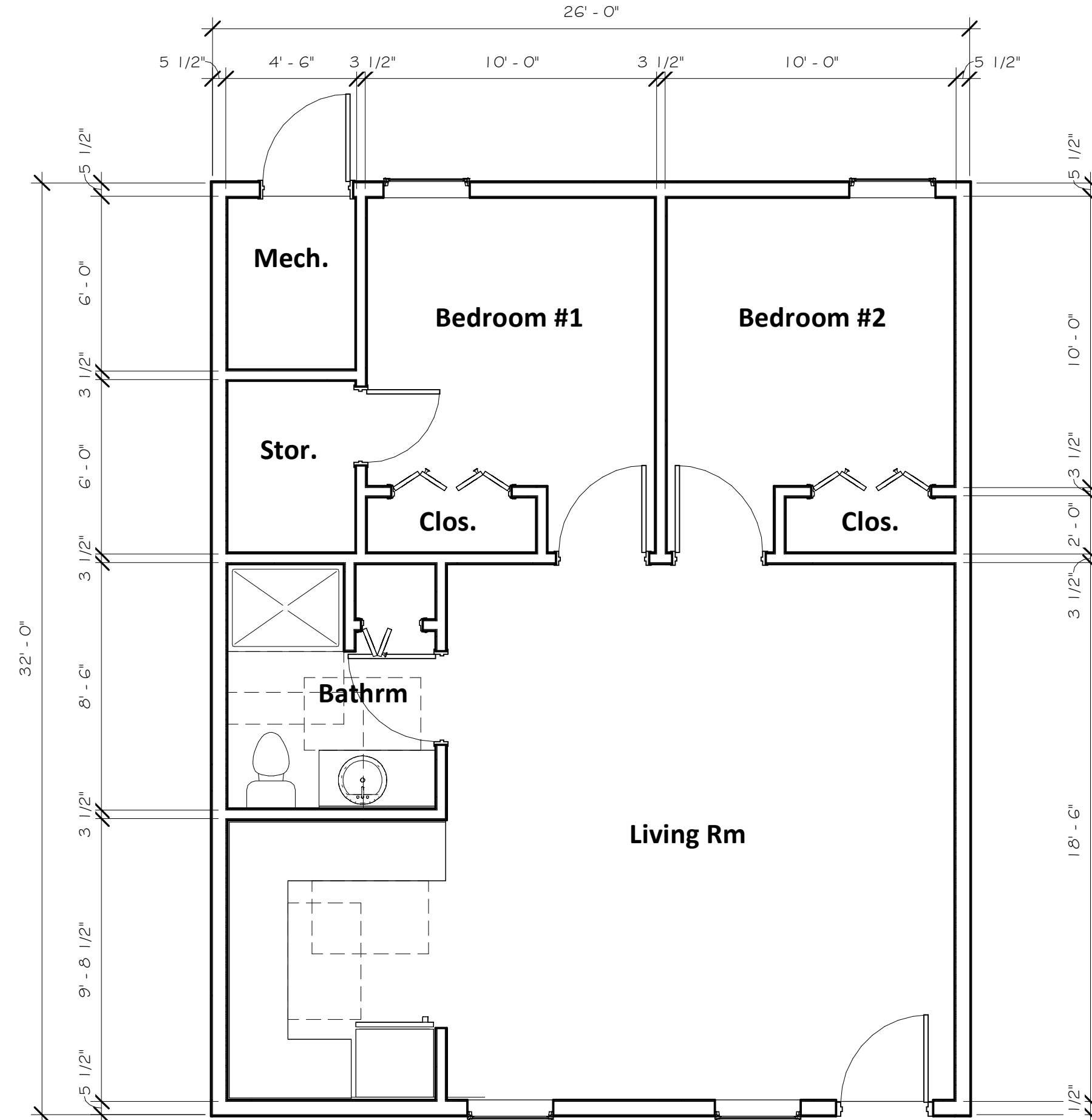
2 Bedroom Standard Unit:  
 Main Floor = 441 s.f.  
 Upper Floor = 399 s.f.  
 Total Floor Area = 840 s.f.



1 Main Floor Plan - 2 Bdrm Standard Unit  
 1/4" = 1'-0"



4 Main Floor Plan - Community Room  
 1/4" = 1'-0"



3 Main Floor Plan - 2 Bdrm Accessible Unit  
 1/4" = 1'-0"

© 2022 HALCYON DESIGN LLC EXPRESSLY RESERVES ITS COMMON LAW COPYRIGHT AND OTHER PROPERTY RIGHTS IN THESE PLANS. THESE PLANS ARE NOT TO BE REPRODUCED, CHANGED OR COPIED IN ANY FORM OR MANNER WHATSOEVER, NOR ARE THEY TO BE ASSIGNED TO ANY THIRD PARTY WITHOUT FIRST OBTAINING THE EXPRESSED WRITTEN PERMISSION AND CONSENT OF HALCYON DESIGN LLC.  
 ALL CONSTRUCTION SHALL CONFORM TO CURRENT INTERNATIONAL BUILDING CODE AND ALL OTHER APPLICABLE CODES.  
 DO NOT SCALE DRAWINGS FOR DIMENSIONS.

Wesley Townhomes  
 350 11th Ave.  
 Longmont, CO 80501



PO Box 684  
 LaSalle, CO 80645  
 303.906.2617

DATE  
 9.28.22

REVISIONS

SHEET TITLE  
 Floor Plans - 2 Bedroom  
 Units & Community Rm

SHEET NUMBER

A11

Project No. 2225